

Prince Dr K Vasudevan College of Engineering and Technology



MANDATORY DISCLOSURE
(2022-23)

MANDATORY DISCLOSURE

| | | |
|---|-----------------------------------|--|
| 1 | Name of the Institution | PRINCE Dr.K.VASUDEVAN COLLEGE OF ENGINEERING AND TECHNOLOGY |
| | Address of the Institution | Medavakkam – Mambakkam Road, Ponmar, Chennai - 127 |
| | City & Pin Code | Chennai-600127 |
| | State | Tamil Nadu |
| | Longitude & Latitude | 12.852936 & 80.173924 |
| | Phone number with STD code | 044-22580801,9840100040 |
| | FAX number with STD code | |
| | Academic hours at the Institution | 09.00 AM to 03.45 PM |
| | Email | prince@princedrivasudevan.com |
| | Website | www.princedrivasudevan.com |
| 2 | Name and address of the Trust | PRINCE EDUCATIONAL SOCIETY |
| | | No: 7, Kannaki Street, Madipakkam |
| | | Chennai-600091. |
| 3 | Name and Address of the Principal | Dr.T. Sunder Selwyn |
| | Exact Designation | Principal |
| | Phone number with STD code | 044-22580801,9444518078 |
| | Email | principal@princedrivasudevan.com |
| | Highest Degree | M.E.,Ph.D. |
| | Field of specialization | Mechanical Engineering |

| | | |
|---|------------------------------------|---|
| 4 | Name of the affiliating University | Anna University, Chennai |
| | Address | Anna University, Guindy Campus, Chennai – 600 025. |
| | Website | www.annauniv.edu |
| | Latest Affiliation period | 2021-2022 |

Governance

A. Governing Body Members:

| Name | Position | Designation & Organization |
|------------------------|--------------------|--|
| Dr.K.Vasudevan | Chairman | Chairman, Prince Group of Institutions, Chennai. |
| Dr. V. Vishnu Karthik | Management | Vice Chairman, Prince Group of Institutions, Chennai. |
| Mr.V.PrasannaVenkatesh | Management Nominee | Vice Chairman, Prince Group of Institutions, Chennai. |
| Er. K. Parthasarathy | Management Nominee | Administrative Officer, PDKVCET, Chennai. |
| Mr. S.Vijay Krishnan | Industrialist | Practice Manager, HCL Technologies, Chennai |
| Mr. G. Vijay Anand | Industrial Expert | Managing director, Embdes Engg Solutions Pvt. Ltd , Bengaluru |
| Mr. K. Loganathan | Educationalist | Chairman, Tmt Abaranjee Ammal Education society, Chennai. |
| Dr K Manivannan | Member | Director, Industry and Academia relations, Vinayaka Mission's Research Foundation |
| Dr. N .R. Sumithra Bai | Member | Retired professor. Queen Mary's College, Chennai. |
| Dr.T.Sunder Selwyn | Member Secretary | Principal, PDKVCET, Chennai. |

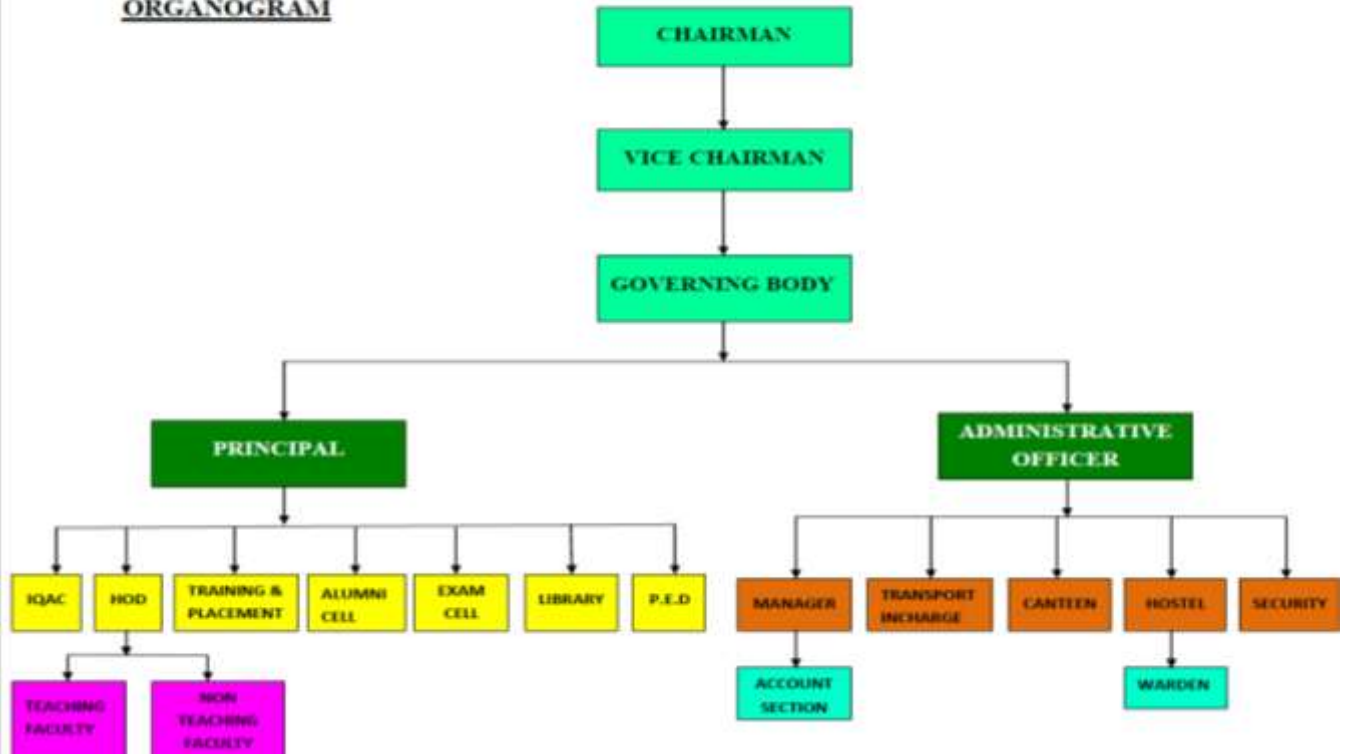
B. Academic Advisory Body

| Name | Position | Designation & Organization |
|------------------------|----------|--|
| Dr.K.Vasudevan | Chairman | Chairman, Prince Group of Institutions, Chennai |
| Dr. V. Vishnu Karthik | Member | Vice Chairman, Prince Group of Institutions, Chennai. |
| Mr.V.PrasannaVenkatesh | Member | Vice Chairman, Prince Group of Institutions, Chennai |
| Dr.T.Sunder Selwyn | Member | Principal, PDKVCET, Chennai |
| Mr.N.Karthigeyan | Member | Assistant Professor,PDKVCET, Chennai |
| Ms.R.Deepa | Member | HOD/CSE,Assistant Professor,PDKVCET, Chennai |
| Ms.P.Geetha Bala | Member | Assistant Professor,PDKVCET, Chennai |
| Ms.J.Vasanthi | Member | Assistant Professor,PDKVCET, Chennai |
| Mr P Velmurugan | Member | Scientific Officer OIC (PPS, Security and Networking), FRFCF, Department of Atomic Energy, Government of India, Kalpakkam |
| Dr. V Dhamodharan | Member | HOD / Department of BBA Government Arts College for Men, Nandhanam, Chennai |
| Dr. N MathanKarthick | Member | Vice Chairman Excel Group of Institutions Komarapalayam, Namakkal |

C. Frequency of Board Meeting and Academic Advisory Body Twice in a year

D. Organizational Chart

ORGANOGRAM



The institution has a strong organizational structure with leadership at all levels. A clear recruitment policy with service rules is in its place in the institution. New recruits undergo orientation programmes to orient them with the institution's organogram and the policies. The Institution ensures effective implementation of governance, administrative functions, policy guidelines, service rules for employment at all functional level also.

Organization chart provides the functional and relational hierarchy of the institution. Chairman heads the institution and looks after all the functions of the institution including academic, administrative and developmental activities. The Management along with the Governing Council and IQAC works towards making the institution to attain its goal of academic excellence and keeping in pace with the emerging trends and development of educational innovation. Decisions arrived by the Management Team, Governing Council and IQAC are issued through the Principal who acts as the main coordinator between all the three entities –the management, the staff members and the students.

Governing council: Governing council comprises of members of Management, Industry experts, Academic experts and members of IQAC. Governing council is formed to manage the ordinary affairs of the college in respect to the curriculum, ratification and approval of the appointments, discipline, legal matters, new initiatives and carrying out of the educational policy of the Society.

Principal: Principal is responsible for the co-ordination of all the academic activities, co-curricular and extra-curricular activities in accordance with the norms and standards prescribed by AICTE, Anna University, organize appointments of faculty members according to the norms of the AICTE and ANNA University, monitors admission, regular class works, placement activities, etc.,

Internal Quality Assurance Cell (IQAC): IQAC forms an integral part in instituting long term quality standards in the institution. IQAC ensures continuous improvement in the entire gamut of academic and administrative operations of PDKVCET by generating good academic ideas, processes and practices and ensuring their implementation for the benefit all the stakeholders — students, parents, teachers, staff, funding agencies, and society in general.

Head of the department: Head of the Department is responsible for all the academic activities, co-curricular and extra-curricular activities of the concerned department. HoD meetings headed by the Principal is organized every month for the review of the academic activities of the month and to plan for the activities of the following month.

Other leadership levels: Committees for Training and placement, Research and development, Hostel and Examinations are headed by senior faculty. Sports and Library are headed by Physical Director and Librarian respectively.

Administration: The General and Finance administration is headed by Administrative officer and Accounts officer supported with a team of technical and support staff.

E. Nature and Extent of involvement of Faculty and Students in Academic affairs / improvements

Our Institution is striving to be an eminent centre for academia, industry and research by imparting knowledge, relevant practices and inculcating human values to address global challenges through novelty and sustainability.

Our well qualified and experienced faculty members are serving as members of Board of Studies, Academic Advisory Committee etc., and they take active part in curriculum revision, discussions related to the implementation of various academic activities and examination systems.

Our research programs focus on the beginning of theories, concepts and in turn revolutionize the world by coming up with ideas, products, and concepts which are useful to the society

Having MOU with various industries and institutions for industrial connect, PDKVCET is publishing research articles with an industry focus on high impact factor journals under Scopus, Web of Science classified journals and patents. Industry research projects are being undertaken in various emerging areas.

PDKVCET has very good infrastructure facilities like ICT enabled classrooms, smart classrooms, laboratories with all the required equipment and software facilities for the successful completion of the course. Faculty members of PDKVCET are all well qualified.

In order to enhance the research capabilities in interdisciplinary areas the faculty members are encouraged to participate in different refresher courses, faculty development programs, workshops, seminar and conferences etc.

Students are well trained during their course of study to improve their employability skills. A well-structured training programme is imparted to students from their first year of study itself.

Cater to the need of diversified learning capability of the students; our Teaching learning process includes Traditional learning, Collaborative learning, experiential learning, participative learning, activity based learning, competition based learning and Innovative

Effective mentoring system is in practice with a faculty mentor for every 20 students to monitor and guide the students to excel in their academic, co-curricular and extracurricular activities. A qualified Counselor is appointed to counsel the students related to their personal problems. Parent-teacher meeting are conducted frequently to convey the academic progress and to improve the parent-teacher-student relationship.

The faculty counselor maintains the complete profile of the students to monitor the growth of the students with the help of a data book. Also monitors and motivates the students to effectively utilize the placement training programs and to make the students job ready.

Internal Quality Assurance Cell (IQAC) is effectively working to promote measures for institutional functioning towards quality enhancement through internalization of quality culture and institutionalization of best practices.

All the departments are associated with Professional Societies. Students are actively participating and organizing various technical events through Students' Chapters like Indian Society of Technical Education (ISTE), Society of Automotive Engineers, Indian Concrete Institute, Computer Society of India, Institution of Electronics and Tele communication Engineering etc.

Students are encouraged and guided to participate in various competitions conducted by Government agencies, private organizations and premier Institutions. Various measures are taken to ensure the Gender Equity. The Institution strives to promote equality of opportunity and treatment for all men and women working and studying at the College. The college aims to foster an environment in which women folks are treated equally and considered as a major asset for the Institution. Anti-Ragging Committee, Discipline & Welfare Committee and Grievance & Redressal Committee are proactive in handling gender-based issues. Encouragement for co-curricular & extracurricular activities for women. Equal representation to women in all student council. Equal opportunities to both the genders in terms of admissions, employment, training programs, sports activities & co-curricular activities. The Health and Hygiene club also initiates and organizes various events and awareness camps on the health and wealth of women folks in the college. Women Empowerment Committee plays a major role in empowering women through organizing the following programs to motivate and cherish the role of Women

To provide an inclusive environment i.e. tolerance and harmony amongst faculty and students various activities are being conducted. National and International commemorative

days, events and festivals are celebrated throughout the year. To sensitize our students and employees to the constitutional obligations, events are regularly organized.

A registered alumni cell is functioning and alumni are contributing significantly through financial contributions and support services for the development of the Institution. Institution is having the facilities for degradable and Non degradable waste Management which includes, solid waste management, Liquid waste management, Biomedical waste management, E waste management, Water recycling system and Hazardous chemical waste management.

The Institution has taken effective steps to enhance the potential of ICT enabled teaching & learning. Training programmes were organized for faculty to maximize the use of ICT. The classes have been equipped with ICT facility. Faculty members were encouraged to take up MOOC and other courses on the SWAYAM and NPTEL platform. Workshops on teaching with Simulations, technology, etc., were given to faculty members. The faculty members were asked to include more of simulations, case analysis, presentations and videos in their lesson plan. The teachers also got trained in taking full-fledged ICT classes for the students. All the lecture halls are enabled with ICT facilities and videos of important study materials have been developed by the faculty members and links are provided in the website for the students to access and learn online. ICT-enabled tools for effective teaching and learning process The Institute follows ICT enabled teaching in addition to the traditional classroom education. Subsequent efforts are taken by the institute to provide e-learning atmosphere in the classroom: In addition to chalk and talk method of teaching, the faculty members are using the IT enabled learning tools such as PPT, Video clippings, Audio system, online sources, to expose the students for advanced knowledge and practical learning. Classrooms are fully furnished with LCD/OHP/Computers Most of the faculty use interactive methods for teaching. The major emphasis is on classroom interaction in terms of research paper presentations, seminars, debates, group discussions, assignments, quiz/tests/viva and laboratory work. The institution has provided 13 ICT enabled classrooms, including 06 smart classrooms and 2 ICT enabled Seminar halls. The college has provided internet and Wi-Fi facility with 75 Mbps internet bandwidth. The classrooms are equipped with LCD projectors with WIFI facilities. Seminar halls & Smart classrooms are equipped with LCD projectors, computer facilities, projector screen, audio system, laptop connecting facility uninterrupted power supply (UPS). Online tests for placement training are conducted through TEZMOS software. The institution has digital library, which helps the students to access NPTEL lectures and study materials. Adequate number of books, Journals,

e-journals and e-books are available in the library. Institute premises are Wi-Fi enabled. Specialized computer laboratory with an internet connection has been provided to promote independent learning. Wi-Fi facility for access of internet is provided on individual laptop and mobile devices. Well monitored security is provided to Wi-Fi users. Its access is controlled by the system administrator. Various devices/technology in ICT includes: Access of course materials through remote devices, Online digital repositories for lectures, course materials, and digital library, Online based academic management systems, Employing the flipped classroom concept, Making use of handheld computers, tablet computers, audio players, projector devices etc. All Faculty members are well trained in using ICT tools for the teaching learning process. Every semester IQAC organizes FDPs to educate faculty members on new tools and techniques for effective teaching through ICT.

The institution promotes students council for facilitating students representation and engagements in various academic & administrative, extra-curricular and co-curricular activities. The objectives of the Students Council and the committees are: To inculcate the qualities of leadership, organization, commitment & responsibility in the students. To make the students participate in the development of the institute as well as in the process develop their personality, organizational skills and career through interactive programs with the faculty, administration and society.

To provide a common platform to students for co-curricular and extra-curricular activities. It is responsible for all the major technical, cultural, literary and sports activities organized in the college premises. Activities under the council will be well supported by a team of faculty members. Each committee comprises of Convener, students' members and staff members. The committees are formed based on the academic and administrative activities initiated and organized in the college. The formation of the committees has enhanced the smooth functioning of the academic activities and other co-curricular events.

Role of the Students council: To formally represent every student in the College. To identify and help resolving the issues faced by students in the College. To officially inform students thought to the college administration on any subject concerning to the students To promote and encourage the students in organizing co-curricular, extra-curricular and other extension activities.

Class committee: Every class has a class committee which consists of the students and faculty members. Class committee meetings are organized periodically and at times of need.

It serves as the voice of the students in front of faculty and has a say in academic matters such as conduct of tests and so on.

F. Mechanism/ Norms and Procedure for democratic/ good Governance

The Institute's vision and mission statements represent the Institution's specific qualities and represent successful leadership enhanced through its effective governance. Governance is to put on record, the structure and practices that have resulted in efficient functioning to provide benefits and satisfaction to all stakeholders and hence lead to overall quality enhancement. The institute's governance makes sure; there is integrity at all levels of individuals, systems and organization in relation to external and internal activities of the college. Strong leadership and management skills in all of the places, where needed are maintained. Lean and competent administration of the governance delivers improvements in research quality and entrepreneurship eco-system. Robust and transparent financial systems, especially regarding procurement; and a strong internal and external audit system. The institution also allows students participation in management and governance at all levels.

Distinctive features of our Mission: The vision and mission of our college focus on Outcome Based Education (OBE). Aligned to that, our college moulds the younger generation to face the challenges in the society. Besides above, our students are moulded to be socially aware and become more responsible for contributing towards societal transformation and nation building along with social responsibility.

Nature of governance: Top management along with Principal and staff shoulder the responsibility in executing the activities that comply with the mission and vision of the institution. Faculty members and students also take leadership roles in various decision making bodies by acting as members in various committees like Governing Council, Internal Quality Assurance Cell, Programme Assessment Committee, Department Advisory Committee, Training and placement, Budget committee, Grievances and Redressal committee, Research and Development Cell, etc.

Perspective plan for development: Institution has perspective plan in tune with vision and mission of the Institution for the effective governance and leadership. Suggestion of the stakeholders and exemplary work of the decision making bodies result in a phenomenal growth and achievement of the perspective plan as detailed below

- Enhancing Quality Teaching and Learning
- More funding for research activities.

- Promotion of research among staff and students
- Accreditation with reputed companies.
- Improving Entrepreneurship development activities
- Technology incubators and collaboration of industries.
- Centers of Excellence.
- Improving quality assurance and sustainability
- Eco friendly infrastructure.
- Enhancing Extension activities.

The Institution supports and motivates the culture of decentralization and participative management. Institution focuses on decentralization by intending equal opportunity to all faculty members to participate in the functioning of the Institution. Each committee has been provided with specific functions catering to the needs of institution for the ongoing progress and development of the Institution.

Management committee takes care of infrastructure facilities which fulfil the quality and the required needs of the education to reach the set goals or bench –marks of the Institution. It also extends all the amenities for the teaching, non-teaching faculty and students.

The faculty members are actively involved in administrative roles and duties by taking on positions such as Department Heads, Wardens, Faculty In-Charges, clubs and committee conveners, co-conveners, members, etc. They associate themselves with various committees namely Purchase committee, IQAC, Academic council, R&D cell, Class Committee, Entrepreneur Development Cell, NSS, Rotaract, and many more. The faculty members are actively engaged in driving a transition through the Mission of the Institution in order to identify and design the road map to attain the vision of the Institution.

The institution promotes the culture of participative management at the strategic level, functional level and operational level.

Strategic level: The Principal, Governing Council, staff and the IQAC are involved in defining policies & procedures, framing guidelines and rules & regulations pertaining to admission, examination, code of conduct-discipline, grievance, support services, finance etc.

Functional level: Faculty members share knowledge among themselves, students and staff members while working for a committee. Principal and faculty members are involved in joint research and have published papers

Operational level: The Principal and faculty members interact with government and external agencies & faculty members maintain interactions with the concerned departments of affiliating university. Students and office staff join hands with the Principal and faculty for the execution of different academic, administrative, extension related, co- and extracurricular activities.

G. Student Feedback mechanism on Institutional Governance / Faculty performance

- Alumni Feedback is taken from Alumni for the academic year. The analysis helped the institute in development of curriculum.
- Feedback about Faculty is taken from students twice a semester. The various parameters on which teaching is assessed are: Communication Skills, Quality of Teaching/ Academic input, Subject Knowledge, Content and Method of Delivery
- An Institute level Parent Teacher meeting is conducted once every semester. During the meeting, parents are made aware about their wards' attendance, academic performance for the semester as well as about the various learning processes conducted in the institute.
- Feedback about Institute is also taken from all students once in a year. This includes the feedback about the facilities and the infrastructure of the institute. In year 2019-20 and 2020-21 the classes were conducted online and the feedback was modified accordingly.
- Various companies visit the campus of the institute for the placement of the students. Based on this feedback, Guest lectures, workshops, seminars are organized for students to help them to be ready for industry.

H. Grievance Redressal mechanism for Faculty, Staff and Students

The institute has set up a Grievance Redressal Cell to look into the grievance of the students, faculty members and staff members. The cell consists of senior members of faculty, closely interacts with all the students, faculty members and staff members, and thus facilitates effective redressal of grievances of any kind.

The details of the members of the Grievance Redressal Cell are given below.

| Name | Position | Designation & Organization |
|----------------------|-----------------|--|
| Dr.T.Sunder Selwyn | Principal | Principal Prince Dr.K.Vasudevan College Of Engineering & Technology |
| Shalini.S | Convener | Assistant Professor,PDKVCET, Chennai |
| Ranjeetha.R | Co-Convener | Assistant Professor,PDKVCET, Chennai |
| Jeba Elizabeth.J | Member | Assistant Professor,PDKVCET, Chennai, |
| Gayathri.C | Member | Assistant Professor,PDKVCET, Chennai |
| Dr. N.R. SumithraBai | External Member | Professor (Retd.), Queen Mary's College, Chennai |
| Manasa G | Student Member | II AI&DS Prince Dr.K.Vasudevan College Of engineering & Technology |
| Manojkumar.S | Student Member | III CSE Prince Dr.K.Vasudevan College Of engineering & Technology |

I. Establishment Of Anti-Ragging Committee

Ragging is strictly prohibited in the college premises. If anybody found indulged in such kind of activities, strict action will be taken irrespective of the extent. Supreme Court of India has banned ragging. In order to prevent such activity in campus, several committees have been developed and brought into operation

ANTI RAGGING COMMITTEE

| Name | Position | Designation & Organization |
|-------------------------|-------------------|--|
| Dr.T.Sunder Selwyn | Principal | Principal Prince Dr.K.Vasudevan College of Engineering & Technology |
| Er. K. Parthasarathy | Member | Administrative Officer, PDKVCET, Chennai |
| Mr. Raj Mohan B | Convener | Assistant Professor, PDKVCET, Chennai |
| Ms. Shanthi D | Student Counselor | Assistant Professor, PDKVCET, Chennai |
| Ms. Angeline Nishidha A | Member | Assistant Professor, PDKVCET, Chennai |
| Mr. Karthiheyam N | Member | Assistant Professor, PDKVCET, Chennai |

ANTI RAGGING SQUAD MEMBERS

| Name | Position | Designation & Organization |
|-------------------------|-------------------|---|
| Dr.T.Sunder Selwyn | Principal | Principal, Prince Dr.K.Vasudevan College of Engineering & Technology |
| Mr. Raj Mohan B | Convener | Assistant Professor, PDKVCET, Chennai |
| Ms. Shanthi D | Student Counselor | Assistant Professor, PDKVCET, Chennai |
| Ms. Angeline Nishidha A | Member | Assistant Professor, PDKVCET, Chennai |
| Mr. Karthiheyam N | Member | Assistant Professor, PDKVCET, Chennai |

J. Internal Complaint Committee (ICC)

In compliance with the Supreme Court Judgment and guidelines particularly against sexual harassment of women at work places (Prevention, Prohibition and Redressal), Act Sexual Harassment 2013) as per the guidelines of UGC, a Committee against Sexual Harassment (ICC) Internal Complaints Committee is reconstituted to provide a healthy and congenial atmosphere to the staff and students of the College. Committee members for Academic year 2021-22

K. Sexual Harassment Committee / Women Empowerment Committee Members

| Name | Position | Designation & Organization |
|----------------------|----------------|--|
| Dr.T.Sunder Selwyn | Principal | Principal Prince Dr.K.Vasudevan College Of engineering & Technology |
| Ms. Shalini S | Convener | Assistant Professor, PDKVCET, Chennai |
| Ms. Srirekha T | Co-Convener | Assistant Professor, PDKVCET, Chennai |
| Ms. Shanmuga Priya R | Member | Assistant Professor, PDKVCET, Chennai |
| Ms. Brinda T S | Member | Assistant Professor, PDKVCET, Chennai |
| Ms. Aishwarya M | Student Member | Student Member |
| Mr. Yogeshwar R | Student Member | Student Member |
| Mr.Karthikeyan V | Student Member | Student Member |

L. SC/ST Committee

The SC/ST welfare committee was started with an objective to enable them to live in society with dignity and self-esteem and without fear or violence or suppression from the dominant castes and to improve the socio-economic conditions of the SCs and STs. This committee also helps the students with physiological issues achieve reconciliation with the self and the other.

| Name | Position | Designation & Organization |
|--------------------|-------------|---|
| Dr.T.Sunder Selwyn | Principal | Principal Prince Dr.K.Vasudevan College Of engineering & Technology |
| Divya.K | Convener | Assistant Professor,PDKVCET, Chennai |
| Chitra.S | Co-Convener | Assistant Professor,PDKVCET, Chennai |
| Deepa.A | Member | Assistant Professor,PDKVCET, Chennai |
| Sovan Samanta | Member | Assistant Professor, PDKVCET, Chennai |
| Suganthi P | Member | Assistant Professor, PDKVCET, Chennai |

L . Internal Quality Assurance Cell

| Position | Name and Designation |
|--------------------------------------|---|
| Chair Person | Dr. T Sunder Selwyn,Principal, PDKVCET. |
| Management | Dr. V. Vishnu Karthik, Vice Chairman, PSVPEC. |
| Management | Er. K. Parthasarathy, Administrative officer, PSVPEC. |
| Nominee-Industrial Expert | Mr . G Vijay Anand Managing director, Embdes Engg Solutions Pvt. Ltd , Bengaluru |
| Nominee-Local Society Representative | Ms. Mageswari Arul President, Local society. |
| Member | Mr Murali Shankar,Manager |
| Member | Mr. Sri Sainath R, Placement Director |
| Nominee-Student | Ms. R Kavitha |
| Nominee –Alumni | Mr Ebenezer Paul,S,Business Analyst, Zoho Corporation |
| Nominee –Alumni | Mr. Varun Ganesh,Proprietor, LS Gears & Gear Boxes, LS Plastic caps & Closures. |
| Members from faculty | All HOD's |
| Audit member | Ms Mythili V, ASP/ S&H, PSVPEC Ms Valarmathy A S, AP/EEE, PSVPEC Ms. Shalini S, AP/cse, PDKVCET |
| Coordinator | Mrs R Deepa |

PROGRAMMES

A. Name of Programmes approved by AICTE

1. B.E Computer Science and Engineering
2. B.E Bio Medical Engineering
3. B.Tech Artificial Intelligence & Data Science
4. M.E Computer Science Engineering

➤ Name of Programmes Accredited by NBA - Nil

➤ Status of Accreditation of the Courses

| S.No | CONTENT | DETAILS | |
|---|--|---|------------------|
| 1 | Total Number of Courses | 4 | |
| 2 | No. of Courses for which applied for Accreditation | Nil | |
| 3 | Status of Accreditation – Preliminary/ Applied for SAR and results awaited/ Applied for SAR and visits completed/ Results of the visits awaited/ Rejected/ Approved for . . .Courses | Nil | |
| Name of the Department | | Computer Science and Engineering | |
| Programme & Course | | B.E Computer Science and Engineering | |
| Level | | UG | |
| Number of seats | | 60 | |
| Duration | | 4Years | |
| Fee | | Govt. Quota: Rs.50,000/- MgmtQuota:Rs.85,000/- | |
| Accreditation Status of the course | | --NotApplicable-- | |
| 1. Placement Facilities | | https://www.princedrivasudevan.in | |
| Campus placement in last three years with minimum salary, maximum salary and average salary | | | |
| Academic Year | 2021-2022 | 2020-2021 | 2019-2020 |
| % Students passed with Distinction | 4 | 7 | - |
| % Students passed with First Class | 25 | 39 | 22 |

| | | | |
|-----------------------------------|--------|--------|--------|
| Students Placed | 28 | 36 | 19 |
| Average Pay package, Rs./Year | 325000 | 550000 | 550000 |
| Students opted for Higher Studies | 1 | 6 | 3 |

Profile of the Principal

| PRINCIPAL / DIRECTOR | | | |
|---|------------------------------------|---|-------------------------|
| PERSONAL DETAILS | | | |
| Surname/Family name | Thangiah | First Name | Sunder Selwyn |
| Father's Name | Thangiah | Mother's Name | Saradha Alice Kaliammal |
| Date of Birth | 06/18/1969 | Mobile Number | 9444518078 |
| STD code | 44 | Land Phone Number | 22740412 |
| Email | prince@princedrkvasu devan.co m | PAN | AHZPT1927D |
| EDUCATIONAL DETAILS | | | |
| Doctorate Degree | Yes | Master's Degree | M.E ENERGY |
| Bachelor's Degree | B.E.MECHANICAL | Other Qualifications | NA |
| International Certification (If Any) | LMISTE, LMNIQR | Field of Specialization | ENERGY |
| DETAILS RELATED TO PROFESSION | | | |
| Date of joining the Institution | 6/3/2013 | Appointment Type | Regular |
| Exact Designation | Principal | | |
| WORK EXPERIENCE DETAILS | | | |
| Teaching Experience (Years) | 16 | Research Experience (Years) | 13 |
| Industry Experience (Years) | | | 7 |
| OTHER DETAILS | | | |
| Research Projects Guided - UG | 40 | Research Projects Guided - PG | 8 |
| Research Projects Guided - PhD | | Number of Books Published | 10 |
| Papers Published - National | 1 | Papers Published - International | 11 |

Fee

| | | |
|-----|---|---|
| 1 | Details of fee, as approved by State Fee Committee, for the Institution | |
| i) | For Govt. Quota | Rs. 50,000 /- |
| ii) | For Mgmt. Quota Accredited Courses: | Rs. 85,000 /- |
| 2 | Time schedule for payment of fee for the entire programme | During the beginning of the ODD semester of every Academic year |
| | No. of students given Fee waiver | 205 |
| | Number of scholarship offered by the Institution | 5 |
| | Criteria for fee waivers/scholarship | To encourage and motivate the Students, the Management provides them with attractive scholarships for their academic achievements in School & their semester results and for excellence |
| | Estimated cost of Boarding and Lodging in Hostels | 65000 |
| | Any other fee please specify | 10000 |

Information of Infrastructure and Other Resources Available

| | | |
|---|---|-----------|
| Number of Class Rooms and size of each | | 19 nos |
| Number of Tutorial rooms and size of each | | 6 nos |
| Number of Laboratories and size of each | | |
| 1 | Physics Laboratory | 252 Sq. M |
| 2 | Chemistry Laboratory | 252 Sq. M |
| 3 | Microprocessor And Microcontroller Laboratory | 252 Sq. M |
| 4 | Digital Signal Processing Laboratory | 252 Sq. M |
| 5 | Devices and Circuits Laboratory | 252 Sq. M |
| 6 | Integrated Circuits Laboratory | 252 Sq. M |
| 7 | Computer Networks Laboratory | 252 Sq. M |
| 8 | Optical And Microwave Laboratory | 252 Sq. M |
| 9 | Engineering Practices Laboratory | 252 Sq. M |
| 10 | Computer Practices Laboratory | 252 Sq. M |
| 11 | Network Laboratory | 252 Sq. M |
| 12 | Data Structures Laboratory | 252 Sq. M |
| 13 | OOPs Laboratory | 252 Sq. M |

| | | |
|----|---|-----------|
| 14 | Mobile Application Development | 252 Sq. M |
| 15 | Communication Laboratory | 252 Sq. M |
| 16 | Bio Chemistry Laboratory | 252 Sq. M |
| 17 | Pathology and Microbiology Laboratory | 252 Sq. M |
| 18 | Human Physiology Laboratory | 252 Sq. M |
| 19 | Biomedical Instrumentation Laboratory | 252 Sq. M |
| 20 | Diagnostic and Therapeutic Equipment Laboratory | 252 Sq. M |
| 21 | CAD/CAM Lab | 252 Sq. M |
| 22 | Thermal Engineering-II Laboratory | 252 Sq. M |
| 23 | Thermal Engineering-I Laboratory | 252 Sq. M |
| 24 | Strength Of Materials Laboratory | 252 Sq. M |
| 25 | Fluid Mechanics Laboratory | 252 Sq. M |
| 26 | Mechatronics Lab | 252 Sq. M |
| 27 | Dynamics Of Machines Laboratory | 252 Sq. M |
| 28 | Metrology and Measurement Laboratory | 252 Sq. M |
| 29 | Workshop | 252 Sq. M |

| | |
|-----------------------------|--|
| Fire and Safety Certificate | Yes, available |
| Hostel Facilities | Boys Hostel – 200 nos capacity; Girls Hostel – 200 nos capacity |

- **Library**

| | | |
|---|--|---|
| 1 | Number of Library books / titles / journals available (Programme-wise) | 10,859 Volumes and 3002 Titles |
| 2 | List of Online national / international journals subscribed | National:460 International:586 |
| 3 | E-Library facilities | Yes Available ; 30 computers with internet facility |
| 4 | National Digital Library (NDL) subscription details | E-Resource Packages Science Direct, J – GATE, EBSCO: E-Books , NLIST, NDL and DELNET etc. |

Number of Journals

| S.No. | Department | Number of Journals |
|-------|---|--------------------|
| 1 | Computer Science and Engineering | 17 |
| 2 | Electrical and Electronics Engineering | 5 |
| 3 | Electronics and Communication Engineering | 12 |
| 4 | Mechanical Engineering | 11 |
| 5 | Bio Medical Engineering | 5 |
| 6 | Artificial Intelligence & Data Science | 4 |
| 7 | M.E(CSE) | 7 |

Laboratory and Workshop

- **List of Major Equipments / Facilities in each Laboratory / Workshop**
- **List of Experimental Setup in each Laboratory / Workshop**

| | | |
|----|---|-----------|
| 1 | Physics Laboratory | 252 Sq. M |
| 2 | Chemistry Laboratory | 252 Sq. M |
| 3 | Microprocessor And Microcontroller Laboratory | 252 Sq. M |
| 4 | Digital Signal Processing Laboratory | 252 Sq. M |
| 5 | Devices and Circuits Laboratory | 252 Sq. M |
| 6 | Integrated Circuits Laboratory | 252 Sq. M |
| 7 | Computer Networks Laboratory | 252 Sq. M |
| 8 | Optical And Microwave Laboratory | 252 Sq. M |
| 9 | Engineering Practices Laboratory | 252 Sq. M |
| 10 | Computer Practices Laboratory | 252 Sq. M |
| 11 | Network Laboratory | 252 Sq. M |
| 12 | Data Structures Laboratory | 252 Sq. M |
| 13 | OOPs Laboratory | 252 Sq. M |
| 14 | Mobile Application Development | 252 Sq. M |
| 15 | Communication Laboratory | 252 Sq. M |
| 16 | Bio Chemistry Laboratory | 252 Sq. M |
| 17 | Pathology and Microbiology Laboratory | 252 Sq. M |
| 18 | Human Physiology Laboratory | 252 Sq. M |

| | | |
|----|---|-----------|
| 19 | Biomedical Instrumentation Laboratory | 252 Sq. M |
| 20 | Diagnostic and Therapeutic Equipment Laboratory | 252 Sq. M |
| 21 | CAD/CAM Lab | 252 Sq. M |
| 22 | Thermal Engineering-II Laboratory | 252 Sq. M |
| 23 | Thermal Engineering-I Laboratory | 252 Sq. M |
| 24 | Strength Of Materials Laboratory | 252 Sq. M |
| 25 | Fluid Mechanics Laboratory | 252 Sq. M |
| 26 | Mechatronics Lab | 252 Sq. M |
| 27 | Dynamics Of Machines Laboratory | 252 Sq. M |
| 28 | Metrology and Measurement Laboratory | 252 Sq. M |
| 29 | Workshop | 1200 Sq.m |

Computing Facilities

| Total Systems= 491 Configuration Details | | | |
|--|----------|---|----------------|
| S.NO | Lab Name | | Over All Total |
| CSE | | | |
| 1 | PSS LAB | Intel DH61WW MotherBoard, Intel Core i3-2100 Processor, 2GB DDR3 Ram, Seagate 500 GB HardDisk, Acer 18.5 Monitor, Logitech Keyboard, Logitech Mouse, PrimeSource Cabinet With SMPS (18) Intel DH61WW MotherBoard, Intel Core i3-2120 3.3 Ghz Processor, 4GB DDR3 Ram, Hitachi 500 GB HardDisk, Acer 18.5 LED Monitor, Logitech Keyboard, Logitech Mouse, PrimeSource Cabinet With SMPS (13) | 31 |
| 2 | COM LAB | Intel DG31PR Motherboard, Intel Dual Core 2.5 Ghz Processor, 2GB DDR 2 RAM, Seagate 250 GB HardDisk, Logitech Keyboard, Logitech Mouse, Acer 15.6 Lcd Monitor (15) Intel DG41RQ Motherboard, Intel DualCore 2.6 Ghz Processor, 2GB DDR2 RAM, Seagate 320 GB HardDisk, Logitech Keyboard, Logitech Mouse, Acer 15 Lcd Monitor (16) Intel D61ZE MotherBoard, Intel Core i3-2120 3.3 Ghz Processor, 4GB DDR3 Ram, Hitachi 500 GB HardDisk, Acer 18.5 LED Monitor, Logitech Keyboard, Logitech Mouse, PrimeSource Cabinet With SMPS (3) | 34 |

| | | | |
|---|---------------|--|-----|
| 3 | DBMS LAB | Intel DG41RQ Motherboard,Intel DualCore 2.7 Ghz Processor,1GB DDR2 RAM,Seagate 320 GB HardDisk,Logitech Keyboard,Logitech Mouse,Acer 15 Lcd Monitor (30),Intel DG45ID Motherboard,Intel Core2Duo 2.93 Ghz Processor,2 GB DDR2 RAM,Seagate 500 GB HardDisk,Logitech Keyboard,Logitech Mouse,Dell 17" TFT Monitor (1) | 31 |
| 4 | OOPS LAB | Intel DG41RQ Motherboard,Intel DualCore 2.7 Ghz Processor,1GB DDR2 RAM,Seagate 320 GB HardDisk,Logitech Keyboard,Logitech Mouse,Acer 15 Lcd Monitor (30),Intel DG45ID Motherboard,Intel Core2Duo 2.93 Ghz Processor,2 GB DDR2 RAM,Seagate 500 GB HardDisk,Logitech Keyboard,Logitech Mouse,Dell 17" TFT Monitor (1) | 31 |
| 5 | CP LAB | Intel DG31PR Motherboard,Intel Dual Core 2.5 Ghz Processor,2GB DDR 2 RAM,Seagate 250 GB HardDisk,Logitech Keyboard,Logitech Mouse,Acer 15.6 Lcd Monitor (63) | 63 |
| 6 | NETWORK LAB | Intel DH61WW MotherBoard,Intel Core i3-2100 Processor,2GB DDR3 Ram,Seagate 500 GB HardDisk,Acer 18.5 Monitor,Logitech Keyboard,Logitech Mouse,PrimeSource Cabinet With SMPS (37),Intel DH61WW MotherBoard,Intel Core i3-2100 Processor,2GB DDR3 Ram,Seagate 500 GB HardDisk,Acer 18.5 Monitor,Logitech Keyboard,Logitech Mouse,PrimeSource Cabinet With SMPS (6) | 43 |
| 7 | CG LAB | Intel DH61WW MotherBoard,Intel Core i3-2120 3.3 Ghz Processor,4GB DDR3 Ram,Hitachi 500 GB HardDisk,Acer 18.5 LED Monitor,Logitech Keyboard,Logitech Mouse,PrimeSource Cabinet With SMPS | 31 |
| 8 | FOSS/RR LAB | Intel DH61WW MotherBoard,Intel Core i3-2120 3.3 Ghz Processor,4GB DDR3 Ram,Hitachi 500 GB HardDisk,Acer 18.5 LED Monitor,Logitech Keyboard,Logitech Mouse,PrimeSource Cabinet With SMPS | 31 |
| 9 | E-JOURNAL LAB | Intel DG41RQ Motherboard,Intel DualCore 2.7 Ghz Processor,1GB DDR2 RAM,Seagate 320 GB HardDisk,Logitech Keyboard,Logitech Mouse,Acer 15 Lcd Monitor (30) | 30 |
| | CSE Total | | 325 |

| | | | |
|-----------------|--------------------------------------|--|----|
| 10 | MICROPROCESSOR & MICROCONTROLLER LAB | Intel DG41WV Motherboard, Intel Dual Core 2.8 Ghz Processor, 2GB DDR 3 RAM, Seagate 500 GB HardDisk, Logitech Keyboard, Logitech Mouse, Acer 15.6 TFT Monitor(14) Intel D61ZE MotherBoard, Intel Core i3-2120 3.3 Ghz Processor, 4GB DDR3 Ram, Hitachi 500 GB HardDisk, Acer 18.5 LED Monitor, Logitech Keyboard, Logitech Mouse, PrimeSource Cabinet With SMPS (1) | 15 |
| 11 | LIC LAB 1 | Intel DG41WV Motherboard, Intel Dual Core 2.8 Ghz Processor, 2GB DDR 3 RAM, Seagate 500 GB HardDisk, Logitech Keyboard, Logitech Mouse, Acer 15.6 TFT Monitor(5) | 5 |
| 12 | LIC LAB 2 | Intel DG41WV Motherboard, Intel Dual Core 2.8 Ghz Processor, 2GB DDR 3 RAM, Seagate 500 GB HardDisk, Logitech Keyboard, Logitech Mouse, Acer 15.6 TFT Monitor(5) | 5 |
| 13 | C & I - EPL LAB | Intel DG41WV Motherboard, Intel Dual Core 2.8 Ghz Processor, 2GB DDR 3 RAM, Seagate 500 GB HardDisk, Logitech Keyboard, Logitech Mouse, Acer 15.6 TFT Monitor(5) | 5 |
| 14 | VLSI LAB | Intel D61ZE MotherBoard, Intel Core i3-2120 3.3 Ghz Processor, 4GB DDR3 Ram, Hitachi 500 GB HardDisk, Acer 18.5 LED Monitor, Logitech Keyboard, Logitech Mouse, PrimeSource Cabinet With SMPS | 16 |
| 15 | DSP LAB | Intel DH61WW MotherBoard, Intel Core i3-2100 Processor, 2GB DDR3 Ram, Seagate 500 GB HardDisk, Acer 18.5 Monitor, Logitech Keyboard, Logitech Mouse, PrimeSource Cabinet With SMPS (15) Intel DH61WW MotherBoard, Intel Core i3-2120 3.3 Ghz Processor, 4GB DDR3 Ram, Hitachi 500 GB HardDisk, Acer 18.5 LED Monitor, Logitech Keyboard, Logitech Mouse, PrimeSource Cabinet With SMPS (15) | 30 |
| ECE & EEE Total | | | 76 |
| MECH | | | |
| 16 | CAD/CAM LAB | Intel DG41RQ Motherboard, Intel DualCore 2.6 Ghz Processor, 2GB DDR2 RAM, Seagate 320 GB HardDisk, Logitech Keyboard, Logitech Mouse, Dell 17" TFT Monitor (30), Intel DG45ID Motherboard, Intel Core2Duo 2.93 Ghz Processor, 2 GB DDR2 RAM, Seagate 500 GB HardDisk, Logitech Keyboard, Logitech Mouse, Dell 17" TFT Monitor(1) Intel DH61WW MotherBoard, Intel Core i3-2100 Processor, 2GB DDR3 Ram, Seagate 500 GB HardDisk, Acer 18.5 Monitor, Logitech Keyboard, Logitech Mouse, PrimeSource Cabinet | 66 |

| | | | |
|---------------------|------------------------|--|----|
| 17 | MECHATRONICS | Intel DH61WW MotherBoard,Intel Core i3-2100 Processor,2GB DDR3 Ram,Seagate 500 GB HardDisk,Acer 18.5 Monitor,Logitech Keyboard,Logitech Mouse,PrimeSource Cabinet With SMPS (13) | 13 |
| 18 | SOM LAB | Intel DG41WV Motherboard,Intel Dual Core 2.8 Ghz Processor,2GB DDR 3 RAM,Seagate 500 GB HardDisk,Logitech Keyboard,Logitech Mouse,Acer 15.6 TFT Monitor(5) | 1 |
| 19 | METROLOGY | Intel DH61WW MotherBoard,Intel Core i3-2100 Processor,2GB DDR3 Ram,Seagate 500 GB HardDisk,Acer 18.5 Monitor,Logitech Keyboard,Logitech Mouse,PrimeSource Cabinet With SMPS (1) | 1 |
| 20 | THERMAL | Intel DH61WW MotherBoard,Intel Core i3-2100 Processor,2GB DDR3 Ram,Seagate 500 GB HardDisk,Acer 18.5 Monitor,Logitech Keyboard,Logitech Mouse,PrimeSource Cabinet With SMPS (1) | 1 |
| | MECH Total | | 82 |
| GENERAL WORK | | | |
| 21 | LIBRARY | Intel DG31PR Motherboard,Intel Dual Core 2.5 Ghz Processor,2GB DDR 2 RAM,Seagate 250 GB HardDisk,Logitech Keyboard,Logitech Mouse,Acer 15.6 Lcd Monitor (1) | 1 |
| 22 | CELL ROOM | Intel DG31PR Motherboard,Intel Dual Core 2.5 Ghz Processor,2GB DDR 2 RAM,Seagate 250 GB HardDisk,Logitech Keyboard,Logitech Mouse,Acer 15.6 Lcd Monitor (2),Intel DG31PR Motherboard,Intel Dual Core 2.5 Ghz Processor,2GB DDR 2 RAM,Seagate 250 GB HardDisk,Logitech Keyboard,Logitech Mouse,Acer 15.6 Lcd Monitor (2) | 4 |
| 23 | OFFICE | Intel DG31PR Motherboard,Intel Dual Core 2.5 Ghz Processor,2GB DDR 2 RAM,Seagate 250 GB HardDisk,Logitech Keyboard,Logitech Mouse,Acer 15.6 Lcd Monitor (1) | 1 |
| 24 | CASHIER | Intel DG31PR Motherboard,Intel Dual Core 2.5 Ghz Processor,2GB DDR 2 RAM,Seagate 250 GB HardDisk,Logitech Keyboard,Logitech Mouse,Acer 15.6 Lcd Monitor (1) H81M-WW Gigabyte MotherBoard,Intel Core i3-4130 Processor,4GB DDR3 RAM,Seagate 500GB HardDisk,Acer 20 LED Monitor,Logitech Keyboard,Logitech Mouse,Primesource SMPS With Cabinet(1) | 2 |
| | General Work Total | | 8 |
| | Over All Total Systems | | 90 |

| | |
|---|--|
| Internet Bandwidth | 50 MBPS |
| Total number of system connected by LAN | 461 |
| Total number of system connected by WAN | 461 |
| Major software packages available | Available as per the requirement |
| Special purpose facilities available (Conduct of online Meetings/Webinars/Workshops, etc.) | 2 Seminar Halls with all the required facilities |
| Facilities for conduct of classes/courses in online mode (Theory & Practical) | |
| ICT enabled class rooms; Online Class through : Zoom Platform & Google Meet | |

| | |
|-----------------|--|
| Innovation Cell | Prince Dr.K.Vasudevan College Of Engineering & Technology in association with Ministry of Human Resource Development (MHRD), Govt. of India has established 'MHRD's Institution's Innovation Council (IIC) to systematically foster the culture of Innovation. The main objective of IIC at PDKVCET is to encourage, inspire and nurture young students by supporting them to work with new ideas and transform them into prototypes. IIC is established to promote innovation in the Institution through multitudinous modes leading to an innovation promotion eco-system in the campus. |
| SC / ST Cell | The SC and ST Cell in our institution promote the special interest of students in the reserved category and to provide special inputs in areas where the students experience difficulty. The cell regularly have to conduct remedial coaching classes on life skills, personality development, writing assignments and make presentations and have to organize interactive sessions and informal meeting with students to attend to their personal, social and academic problems. |

| | |
|--|-------------------|
| Compliance of the National Academic Depository (NAD), applicable to PGCM/ PGDM Institutions and University Departments | -Not Applicable - |
|--|-------------------|

• *List of facilities available*

| Games and Sports Facilities | | | | |
|-----------------------------|--|--------------------------|---------------|-----------|
| S.NO | Sports/Indoor And Outdoor Games Grounds/Courts | Number Of Courts/Grounds | Size LxB In M | Area Sq.M |
| 1 | Volley Ball | 2 | 40x20 | 800 |
| 2 | Basketball | 2 | 40x20 | 800 |
| 3 | Throwball | 1 | 40x20 | 800 |
| 4 | Football | 1 | 120x90 | 10800 |
| 5 | Handball | 1 | 40x20 | 800 |
| 6 | KhoKho | 1 | 27x16 | 432 |
| 7 | Kabaddi | 2 | 13x10 | 130 |
| 8 | Table Tennis | 2 | - | 1200 |
| 9 | Chess | 1 | - | 1200 |
| 10 | Carrom | 1 | - | 1200 |
| 11 | Yoga Hall | 1 | - | 1200 |
| 12 | Cricket | 1 | | 4 Acres |

Facilities for GYM

| S.NO | PARTICULARS | NUMBER OF STATION |
|------|-----------------------|-------------------|
| 1 | Rod | 5 |
| 2 | Multi Gym 4 Station | 1 |
| 3 | Push Up Stand | 2 |
| 4 | Multi Bench 1320 Avon | 1 |
| 5 | Leg Press Hack Squat | 1 |
| 6 | Gym ball | 1 |

| | | | |
|--|----|----------------------------------|-------|
| | 7 | Bumbles | 100KG |
| | 8 | Bench Press With Squat Stand | 1 |
| | 9 | Flat Bench 2xs Pipes | 1 |
| | 10 | Abs/Bench Inclined/Declined/Flat | 1 |
| | 11 | Plates | 100KG |
| | 12 | Bumbles/Plant | 1 |
| | 13 | Thread Mill | 1 |
| | 14 | Cycling | 1 |

• **Extra-Curricular Activities**

The institution has an auditorium with a seating capacity of 300 and equipped with LCD projector, screen and audio system with multimedia capability. Workshops, seminars, and other co-curricular and extracurricular events in the institution are held in the auditorium.

Cultural activities The institution provides outdoor open stage as well as auditorium to conduct various co-curricular activities of clubs and committees namely Cultural and event committee, John Milton English Club, Science Club, Aryabhata Maths Club, Sir C.V raman Club, ECO Club, EDC, Women empowerment cell in order to bring out their hidden talents and encourage them to participate in the inter department level and inter college level competitions. The college organizes events related through NSS, Health club, Rotaract club and YRC. Functions like Cultural Fest, Independence Day, Republic Day, Sports day, Teacher's Day, Women's Day, Annual Day etc., are celebrated. Co-curricular & Extracurricular Activities Every year institute organizes various cultural activities during fresher's welcome, annual social gathering and farewell events to explore and nourish the hidden talents of students. Institute has a well-furnished auditorium having 500 students seating capacity to carry out various cultural / extracurricular activities like Induction Day, dance, rangoli and competition, annual social gathering, farewell, programs on yoga and meditation etc. The facilities for sports, games and cultural activities are efficiently utilized by students for various events like Symposiums, Annual day, sports week, etc. The usage for the same is monitored.

Soft Skill Development Facilities

The Institution offers various training programs for the development of skills of the students to reach their destination.
 Trainings are provided to all the students right from their first year onwards.
 Our Unique Proposition includes:
 • Training modules by Industry Experts

| | |
|---|--|
| | <ul style="list-style-type: none"> • Training offered by experienced faculties with industry experience and soft skills • Year-wise scheduled programs, flexible option to choose from and industry customized program • Innovative Learning practices and infrastructure focused on futuristic technology • Provide live platform to demonstrate learning through guided social and industrial projects • Students are handheld for patent registration of their innovative projects • Continuous assessments and monitoring for quality improvement and skill set mapping • Peer learning to improve team work and cognitive skills |
| <p>• <i>Teaching Learning Process</i></p> | |
| Curriculum and syllabus for each of the Programmes as approved by the University | Available in website www.princedrivasudevan.com |
| Academic Calendar of the University | Available in website www.princedrivasudevan.com |
| Academic Time Table with the name of the Faculty members handling the Course | Available in website www.princedrivasudevan.com |
| Teaching Load of each Faculty | Professor: 1 Theory & 1 Lab Associate and Assistant Professor: 2 Theory & 1 Lab |
| Internal Continuous Evaluation System and place | |
| <p>Internal Assessment: Internal Assessment comprises three Internal Assessment Tests. Various components of internal assessment mechanism are briefly discussed with respect to frequency and variety. 1. Internal Assessment (IA) tests: Three internal assessment tests are conducted during the semester. IA Test-1 covers unit 1 & 2, IA Test-2 covers unit 3 & 4 and IA Test-3 covers all the 5 units. Question papers are set to evaluate the attainment of various Course Outcomes along with thought-provoking questions. This ensures a wide variety of questions which adds robustness to the system.</p> <p>Laboratory Courses: The following process will be followed for the evaluation of Laboratory Courses</p> | |

- Evaluation of the student's observation book and record notebook.
- Evaluation by oral examination on the student's knowledge before the start of experiment.
- Model practical examination.

Enrolment and Placement details of students in the last 3 years

| ACADEMIC YEAR | 2021-2022 | 2020-2021 | 2019-2020 |
|-------------------------------|------------------|------------------|------------------|
| TOTAL NO OF STUDENTS | 34 | 93 | 80 |
| PERCENTAGE OF STUDENTS PLACED | 50% | 55.91% | 46.25% |

List of Research Projects / Consultancy works

| | |
|---|----|
| Number of Projects carried out, funding agency, grants received | 3 |
| Publications (if any) out of research in last three years out of masters projects | - |
| Industry linkage | 78 |
| MOUs with Industries | 25 |

LoA and subsequent EoA till the current Academic Year

F.No. Southern/1-10969758664/2022/EOA dated 03.07.2022

Best Practices adopted, if any

- PDKVCET , over a period of 13 years, has developed some best practices which added to the quality improvement in terms of teaching and learning at the Institute.
- PDKVCET best practices are the educational strategies, activities and approaches undertaken to ensure that each student gets maximum benefit from the educational experience at the Institute.
- The Institute has many prevalent best practices such as:
- Academic Preview and Academic Review.
- Academic planning and preparation is meticulously monitored (Academic Preview) and its efficacy is checked and quantified in a well-defined process (Academic Review).
- The college has an active Alumni association that meets twice in a year. All graduates are

encouraged to become members of this association. The Alumni association sponsors a book bank facility for needy students and outstanding faculty award.

- All the departments arrange industrial visits in each semester for the benefit of the students. In the third year of their study, the students are encouraged to go on an educational tour accompanied by faculty members.
- The college encourages students each year at the department level to conduct national level technical symposiums in which they organize various technical programs such as model building, paper presentation etc for the benefit of the student fraternity from our and various other colleges..
- Both boys and girl students are encouraged to participate in various sports events
- The Training and Placement Cell headed by a Senior Professor in the college plays a very active role in getting our students placed in various leading multi-National companies (MNCs) and Indian Companies.
- The National Service Scheme (NSS) of PDKVCET has been doing remarkable work during the last five years. The unit has been in the forefront of all the activities in the college and has offered many selfless services to the society. The NSS plays a large role in making the students socially committed, self-confident and responsible citizens of the nation.
- MoUs are signed with reputed industries and Government organizations to enhance technical expertise of faculty and students.
- Certificate courses are offered with the help of industrial experts in advanced topics / skill enhancement techniques.
- Alumni (who are entrepreneurs / occupying responsible position at industries) are called for interaction to enrich student's knowledge on field practices.